

TO OUR PATIENTS: Please bring this form with you for your appointment. Please notify us if you are unable to keep your appointment.

**Northern California**  **Retina Vitreous Assoc.**  
*Medical Group, Inc.*

Sterling J. Haidt, M.D.  
Mark R. Wieland, M.D.  
Edwin E. Boldrey, M.D.  
James D. Palmer, M.D.  
J. Luigi Borrillo, M.D.  
Rahul N. Khurana, M.D.  
Alok S. Bansal, M.D.

Doctor Requesting Consult \_\_\_\_\_

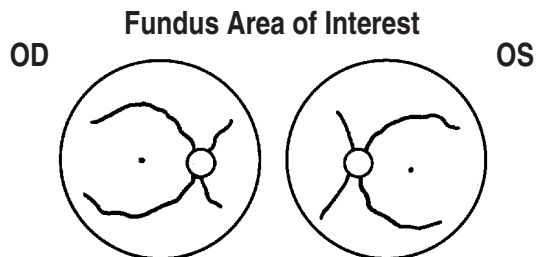
Patient's Name \_\_\_\_\_

Indication for Consult: \_\_\_\_\_

Visual Acuity: R.E. 20/ \_\_\_\_\_ Date of Consult \_\_\_\_\_

L.E. 20/ \_\_\_\_\_

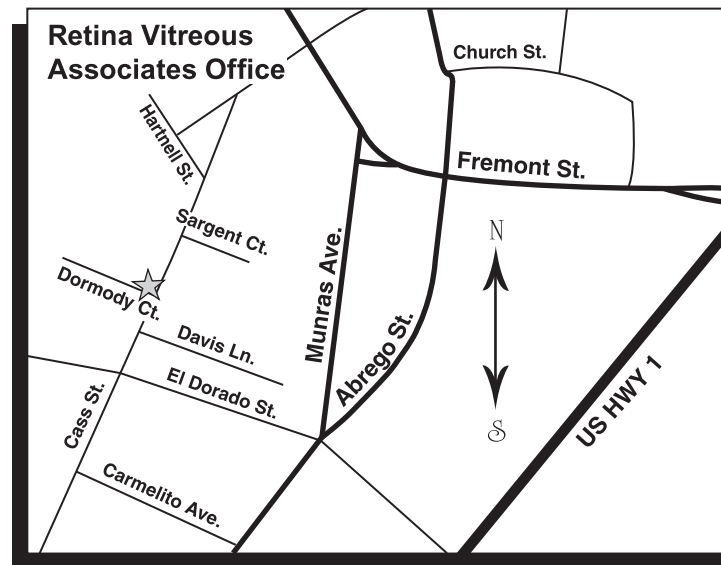
Other Information \_\_\_\_\_



- Consultation
- Fluorescein Angiogram
- Fundus Photographs
- Ophthalmic Ultrasonography
- OCT (optical coherence tomography) macula disc

**Retina Vitreous Assoc., Inc. • Cass Street Medical Plaza**  
**798 Cass St., Suite 200 • Monterey, CA 93940**  
**831-373-6280 • Fax (831) 373-0151**

Please check if new supply of forms is needed



 Retina Vitreous Assoc., Inc. • Cass St. Medial Plaza  
798 Cass St., Suite 200 • Monterey, CA 93940 • 831-373-6280

### Directions

**From Santa Cruz or Watsonville:** Take US 1 South towards Monterey. In Monterey, take downtown Monterey exit off US 1 which turns into Fremont St. Continue on Fremont St. approximately 0.6 miles. Turn left onto Abrego St. Turn right onto El Dorado St. Turn right onto Cass St. located on the left side of street. Parking is available in parking lot near office or surrounding streets.

**From Salinas:** Take Monterey Salinas Hwy (Rt. 68) to US 1 South. In Monterey, take downtown Monterey exit off US 1 which turns into Fremont St. Continue on Fremont St. approximately 0.6 miles. Turn left onto Abrego St. Turn right onto El Dorado St. Turn right onto Cass St. located on the left side of street. Parking is available in parking lot near office or surrounding streets.

**From Gilroy:** Take CA Rt. 152 East to US 101 South. Turn off US 101 South onto CA Rt. 156 which becomes US 1 South. In Monterey, take downtown Monterey exit off US 1 which turns into Fremont St. Continue on Fremont St. approximately 0.6 miles. Turn left onto Abrego St. Turn right onto El Dorado St. Turn right onto Cass St. located on the left side of street. Parking is available in parking lot near office or surrounding streets.

**From Carmel:** In Monterey, exit off US 1 to the left onto Munras Avenue. Turn left onto Cass St. The office is on the left. Parking is available in parking lot near office or surrounding streets.